
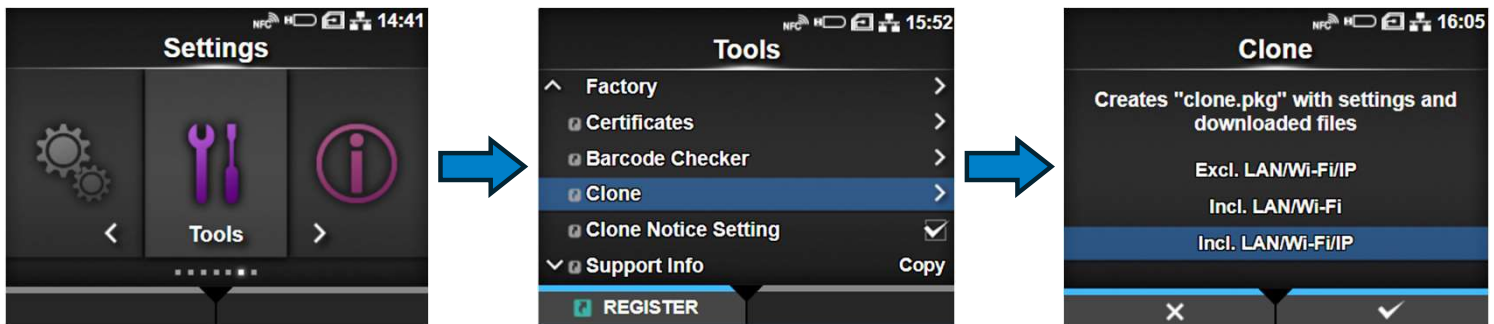


TT-002 Save/Load a Clone File


S84NX/S86NX


Once all settings are optimized, it is recommended to save a backup file of all the configuration settings which we call a Clone File. This procedure can also be useful for transferring your settings to a replacement product or for setting up multiple units with the same settings.

1. Start with inserting a USB stick into one of the USB-A ports on the print engine. You will see this icon  in the top right corner of the LCD. With the printer Offline, enter the Settings Menu and select "Tools". Then use the down arrow to select "Clone"



2. You have 3 options to choose from depending on what settings you want to include in the Clone file:
 - **Excl. LAN/Wi-Fi/IP** - Copy the product settings and data, excluding network information, to the USB memory. This is useful when you set up multiple products, that are already connected to a network, with the same settings. Or troubleshooting.
 - **Incl. LAN/Wi-Fi** - Copy the product settings and data, including network information (excluding the IP address), to the USB memory. This is useful when you set up multiple products to be connected to the same network with the same settings.
 - **Incl. LAN/Wi-Fi/IP** - Copy the product settings and data, including network information (including the IP address), to the USB memory. This is useful when transferring the settings of a product you are replacing to continue using them in a new product. Complete backup of a specific unit.
3. By default, the clone files are named with the print engines serial number and note whether you included network information/IP Address:

 Clone_S84NX_GE[redacted]096.pkg

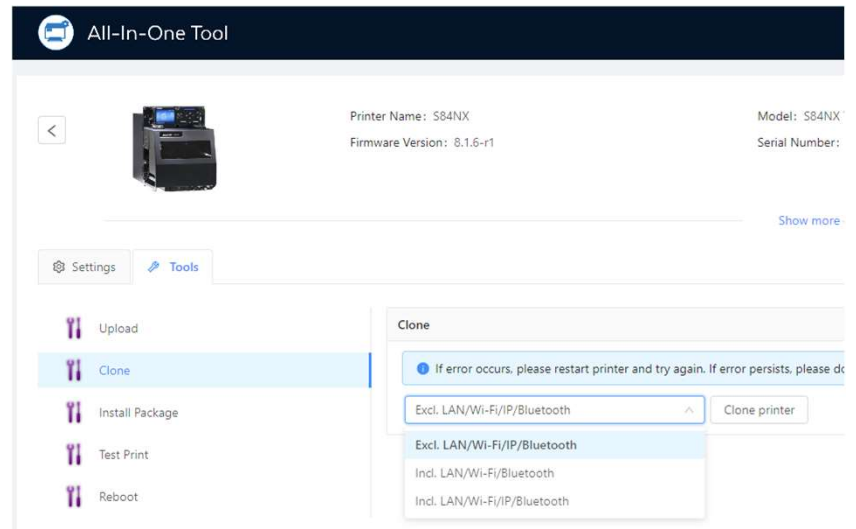
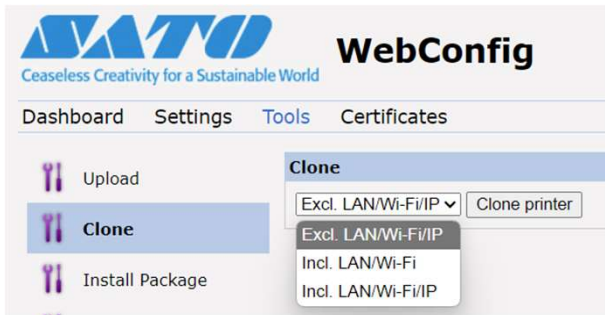
 Clone_S84NX_GE[redacted]096_LAN_WIFI.pkg

 Clone_S84NX_GE[redacted]096_LAN_WIFI_IP.pkg

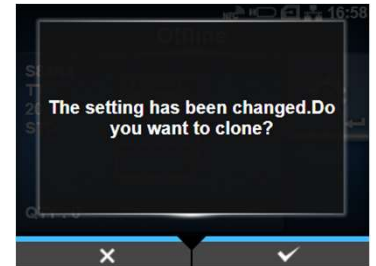
TT-002 Save/Load a Clone File


S84NX/S86NX

4. Note you can also save/load a Clone File straight to/from a computer using the WebConfig or SATO All-In-One Tool if you are connected via LAN/Wi-Fi.



5. **Clone Notice Setting** - By enabling this, a message prompting you to create a clone appears if the product's settings have been changed. Available only if you have connected the USB memory to the USB connector (Type A) on the back of the product. The message appears after you change settings, when you go from the setting menu to the Offline screen.



6. To **LOAD** a clone file, put the printer in OFFLINE mode. Insert the USB stick (with desired .pkg file saved on it) into one of the USB-A ports on the Print Engine. The printer will recognize the .pkg files and a prompt will ask if you want to "Install Package?". Select the clone file you want to load and press  to proceed. The printer will reboot after installation.

